

JR EAST PASS

Travel and discover!

Unlimited rides on all Shinkansen and other JR trains in the "unlimited-ride area"!
Enjoy a memorable trip with the top value JR EAST PASS!

Nagano, Niigata area

Kagayaki (¥7)



Tokai (¥2)



Nagano,
Niigata
area

Eligibility

A foreign national with a
non-Japanese passport

Validity period

5 consecutive days

Price

Adult

(12 years of age or older)

18,000 yen

Child

(between 6 and 11 years of age)

9,000 yen

*An original, valid passport belonging to the person who will be using the rail pass must be presented at the time of purchase/exchange. (Copies of passports and other substitute documents will not be accepted.)

*Rail pass type cannot be changed following purchase.

*You may purchase multiple rail passes if their periods of validity do not overlap.

Nagano, Niigata area

https://www.jreast.co.jp/multi/en/pass/eastpass_n.html



JR EAST PASS

(Nagano, Niigata area)

If you want to make the most of your trip in Eastern Japan, we recommend a visit to the Nagano and Niigata areas. Both are relatively close to Tokyo and offer a wide variety of sightseeing spots, including leisure facilities such as hot springs and ski resorts – all surrounded by stunning views.



① Matsumoto Castle



② Kamikochi



③ Echigo-Yuzawa



④ Tokamachi



⑤ Karuizawa



⑥ Kusatsu



⑦ Izu



⑧ Tokyo (Senso-ji)



Boarding zone This pass allows unlimited rides using reserved seats on the ordinary cars of the limited express trains (including Shinkansen), express trains, and local trains on JR East train lines, all the Izu Kyuko lines, all the Tokyo Monorail lines, all the Hokuetsu Express lines, the Echigo TOKImeki Railway line (between Naoetsu and Arai), and JR Bus Kanto buses (excluding expressway bus routes and some other bus routes) within the unlimited-ride area. In addition, the pass also allows unlimited rides using reserved seats on the ordinary cars of the limited express trains such as the Tobu Direct Limited Express "Nikko", "Kinugawa" and "SPACIA Kinugawa" trains.

*1) The pass is not valid for the Hayabusa and Komachi Shinkansen trains. *2) The pass is not valid for limited express trains that arrive at and depart from the Tobu line stations. *3) GALA Yuzawa Station is open only during winter and spring.

Passes will be available for purchase from JR East Reserved Seat Ticket Vending Machines.

*Limited to Reserved Seat Ticket Vending Machines placed at the JR East stations that have the passport reader installed.
*Tickets can still be purchased and staff consulted at ticket counters.
*Look for Reserved Seat Ticket Vending Machines with the applicable logos shown to the right.



Passport reader



Logo (example)

Find out more at:
https://www.jreast.co.jp/e/downloads/pdf/passport_operation_e.pdf

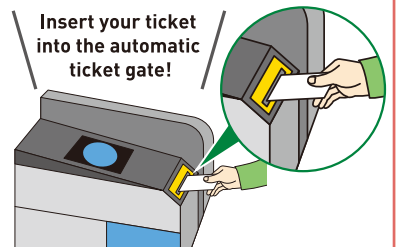
It's easy to reserve a seat using a Reserved Seat Ticket Vending Machine!



Images are for illustrative purposes only.

Reserved seats on shinkansen, limited express trains, etc. can be reserved using Reserved Seat Ticket Vending Machines at JR EAST stations.

How to Use the Automatic Ticket Gates



How to Purchase a JR EAST Pass?

1 On the website



You can purchase passes via the JR-EAST Train Reservation website.
<https://www.eki-net.com/en/jreast-train-reservation/Top/Index>

*Applies to purchases made beginning June 27, 2021



2 In Japan



You can purchase the pass at a sales location.

<http://www.jreast.co.jp/e/ticketwindow/>



3 At an overseas travel agency



You can purchase an Exchange Order before coming to Japan. After arrival in Japan, please exchange it for the pass.



EAST JAPAN RAILWAY COMPANY

<https://www.jreast.co.jp/e/>



JR East InfoLine

Useful information, such as train schedules, the shortest routes to your destination and the location of JR Ticket Offices at each station, is available in English, Korean and Chinese.
TEL. 050-2016-1603 Office Hours 10:00 - 18:00 (except during the year-end/new year holidays)
*The phone number listed to the left is not a booking line.

This information is current as of April 2021. [2021/04] ★